

MONTHLY MEMBERSHIP PROGRESS REPORT

LOCATION UTAH

District 28 U

Results as of: 3/31/2023

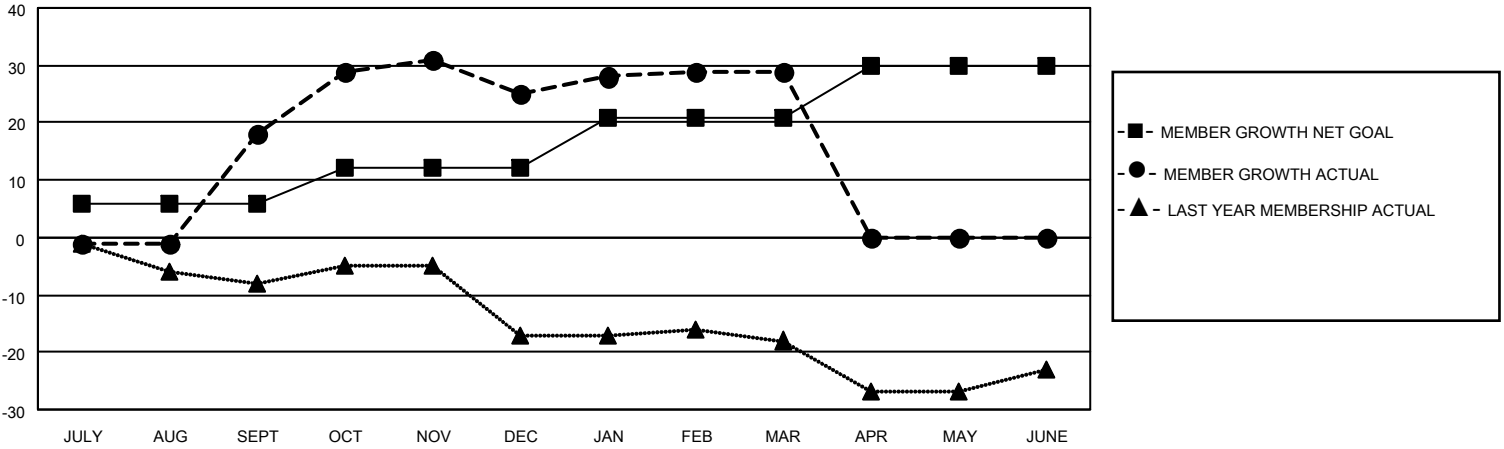
Clubs			
RESULTS FOR 2022-2023			
QUARTER	NEW CLUB GOAL	NEW CLUBS	DROPPED CLUBS
JULY/AUG/SEPT	0	0	0
OCT/NOV/DEC	0	0	1
JAN/FEB/MAR	0	0	0
APR/MAY/JUNE	1	0	0

Members			
RESULTS FOR 2022-2023			
QUARTER	MEMBER GROWTH NET GOAL	MEMBER GROWTH ACTUAL	DROPPED MEMBERS ACTUAL (including transfers)
JULY/AUG/SEPT	6	32	14
OCT/NOV/DEC	6	17	9
JAN/FEB/MAR	9	18	8
APR/MAY/JUNE	9	0	0

GOALS AND ACTUAL NEW CLUBS CUMULATIVE



GOALS AND ACTUAL MEMBERS CUMULATIVE



DROPPED CLUBS: 1

15 CLUBS OF 27 ADDED 1 OR MORE NEW MEMBERS

GENDER DISTRIBUTION

MALE	317 (72.05%)
FEMALE	123 (27.95%)
NON BINARY	0 (0.00%)
PREFER NOT TO ANSWER	0 (0.00%)

DROPPED MEMBERS

DECEASED	5
CLUB CANCELLED	5
OTHER	21
TOTAL	31

[CLICK HERE FOR CUMULATIVE MEMBERSHIP DATA](#)

TOTAL FAMILY UNIT MEMBERS	79
FAMILY MEMBERS PAYING HALF DUES	40